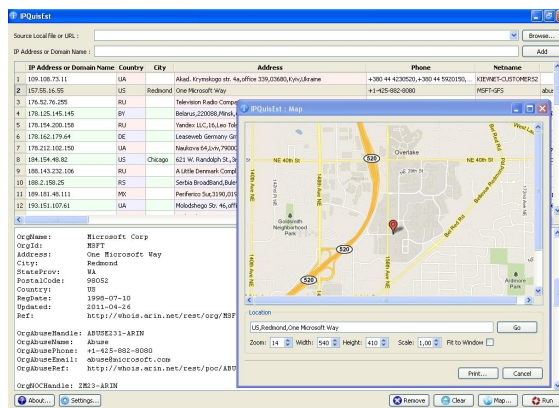


## IPQuisEst v.2.2.

Copyright (C) Vadym Shvachko,  
2011, Kyiv, Ukraine

Phone : +380(50)637-16-09  
E-mail : [vshvach@gmail.com](mailto:vshvach@gmail.com)  
Skype : vshvach  
AIM : shvach



IPQuisEst application is the networking client that allows users to obtain the actual detailed information about owners of the domain names and IP addresses.

IPQuisEst is the GUI-based application software that performs WHOIS-lookup for domain names and IP addresses (source Hosts) with implementing the following:

- Entering the individual source Host or/and selecting (downloading) the List of the source Hosts (with possibility to edit this List);
- Automatic or manual setting of the appropriate WHOIS-servers;
- Formulating the specific requests to WHOIS-servers;
- Detecting and displaying the main data concerning selected source Hosts and all obtained information from the appropriate WHOIS-servers;
- Showing and processing the electronic Maps with indicating of the detected or entered locations for the source Hosts.

### References.

- Qt v.4.7.0 ( is available under the Lesser General Public License, LGPL ), Copyright (C) Nokia Corporation, <http://qt.nokia.com> ;
- Icon set ( freeware ), Copyright (C) Aha-Soft, <http://www.aha-soft.com> .

### Platform.

IPQuisEst application was created with using of C++ as cross-platform software. There are executable codes for Windows and Ubuntu Linux operating systems. Also, IPQuisEst can be compiled for other operating systems - according to availability of Qt software for the appropriate platforms (<http://qt.nokia.com/products/platform>).

### License Agreement.

This software is designed for personal and commercial using. By purchasing IPQuisEst software, the purchaser agrees to the terms of this agreement, as detailed below.

IPQuesEst application is provided “as is”. Developer cannot be held liable for any negative issues that may occur as a result of using this code.

Purchaser agrees that all ownership and copyright of the IPQuesEst software remains the property of Vadym Shvachko. Purchaser may not resell, distribute, lease, license or sub-license the IPQuesEst software or modify it (or its subset), to any third party.

### **Installation and Uninstallation.**

Installation procedure is not needed for work under Windows. Just unpacking of content of distributive archive (IPQuesEst-2.1.zip) to any place on disk is necessary. The IPQuesEst application will be started after the mouse's click on IPQuesEst.exe file. The uninstall procedure is simply deletion of appropriate files from actual place on disk.

Debian package for work under Ubuntu Linux should be unpacked from IPQuesEst-2.1.deb.tar.gz archive. Then, Package Installer can place (after the mouse's click on IPQuesEst-2.1.deb) the appropriate files (IPQuesEst.\*) to /usr/bin and the necessary libraries (libQt\*) to /usr/lib directory. Application will be started by /usr/bin/IPQuesEst executable module. Removing of package can be done by execution in terminal: `dpkg -r IPQuesEst` .

### **Using.**

IPQuesEst application has a standard intuitive interface. Work with this software can be started as by the mouse's click on appropriate executable module, as by the manual entering from the command line. In last case, there is possibility to note the full path (or exact URL) to the file which contain a list of source Hosts.

After starting of the main panel of application, user has the possibility to edit the settings for the further work of application. The appropriate panel will be started after clicking on "Settings..." button. There is the possibility to change the following settings here: a) The Stopping tags at file with the list of source Hosts for parsing; b) Parameters of the Destination Hosts (WHOIS-servers) and regime of selection of these servers; c) Parameters of Coordinator of the unique identifiers (it is actual in case of the automatic regime of selection of the WHOIS-servers); d) Content of the Request string to the WHOIS-servers; e) Directory for placing the temporary files.

The full path to the file which contains a list of source Hosts can be entered with help of the standard dialog of the file selection after clicking on "Browse..." button. The exact URL (started with “http://”) can be selected in the "Source Local file or URL" line. Then, "Browse..." button should be clicked or "Enter" keyboard's button should be pressed. In case of necessity, the appropriate login and password for the access to this file should be entered accordingly.

The separated Host name can be entered manually in "IP Address or Domain name" line. This information will be placed to the operation table after

clicking on "Add" panel's button or after pressing of "Enter" keyboard's button (when cursor is placed at the noted line).

After filling the first column of the operation table (at least one source Host should be noted), direct performing the WHOIS-lookup for domain names or IP addresses can be started after clicking on "Run..." button. The detected main data concerning selected source Hosts will be placed in the appropriate columns of the operation table. Also all obtained information from the appropriate WHOIS-servers will appear at separated sub-window after each selection (clicking) of rows of the operation table.

The electronic Map with indicating of the detected location for the source Host will be displayed ("Map" panel) after clicking on "Map..." button or double clicking on the appropriate row of the operation table. User can edit the detected location string for the source Host or can enter new any location. Then, new Map can be displayed after pressing of "Enter" keyboard's button or clicking on "Go" button. Also new Map will be displayed after changing "Zoom", "Width" and "Height" values. Regime of showing of Map can be modified after changing of "Scale" and "Fit to Window". Obtained Map can be printed after clicking on "Print..." button.

The separated rows can be removed from the operation table by clicking on "Remove..." button. The whole operation table will be cleared after pressing on "Clear..." button.

The necessary help information is accessible from "About IPQuisEst" panel which can be started after clicking on "About..." button.

### **Development.**

The actual information concerning IPQuisEst application can be found in Internet at [http://shvachko.net/my3w/vsh\\_wares\\_eng.html#ipquisest](http://shvachko.net/my3w/vsh_wares_eng.html#ipquisest).

Code of this application (extensible Qt-project or the separated classes) can be a base for creation of software with using of the networking client module, WHOIS protocol, HTTP protocol, Google Maps Image API.